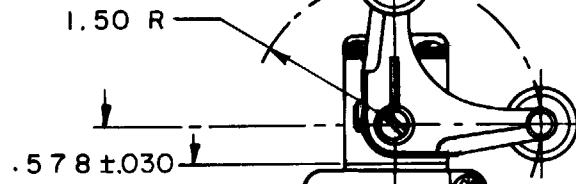


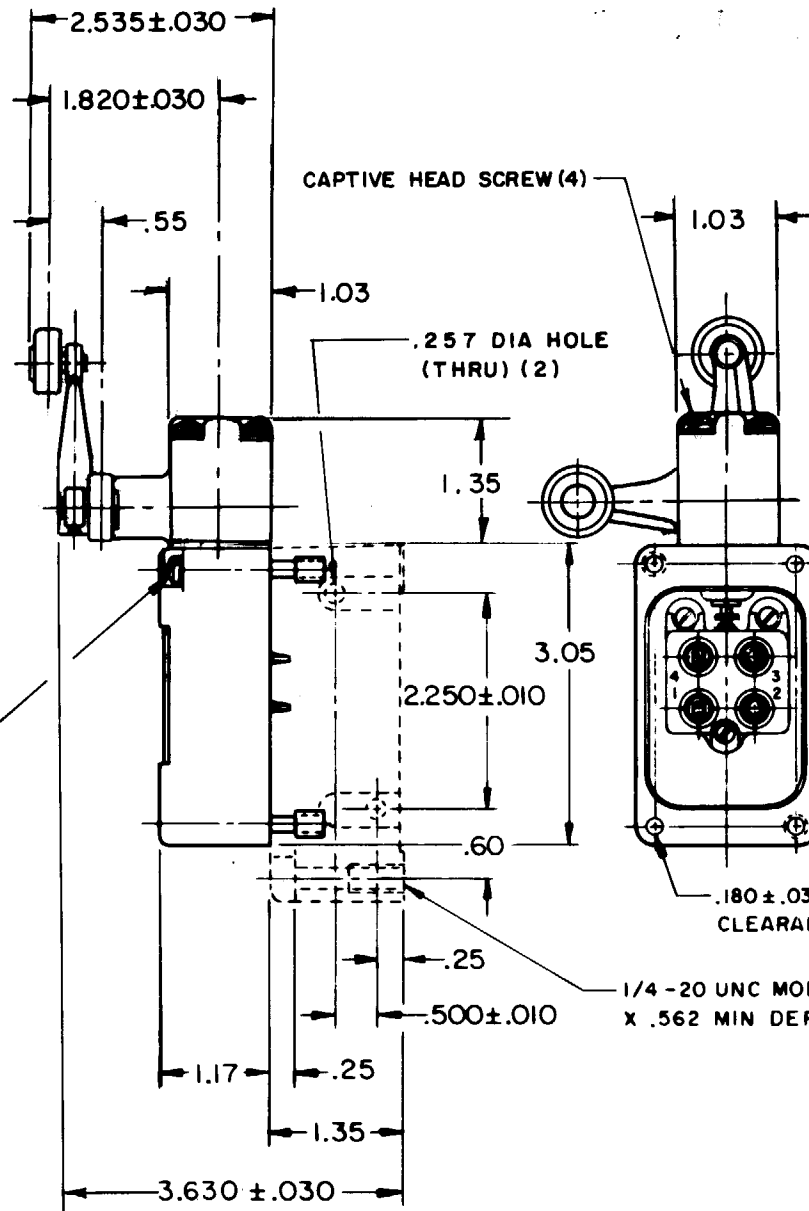
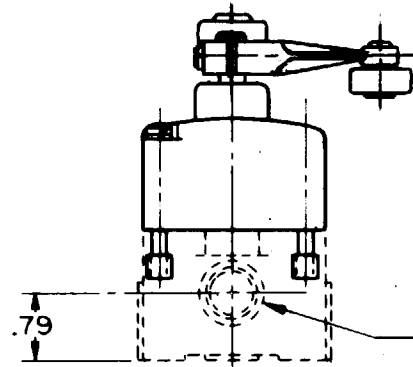
.750 ± .030 DIA X .250 WIDE  
 HARDENED STEEL ROLLER



2.664 ± .010

CAPTIVE MOUNTING  
 SCREW (2)

1.476 ± .010

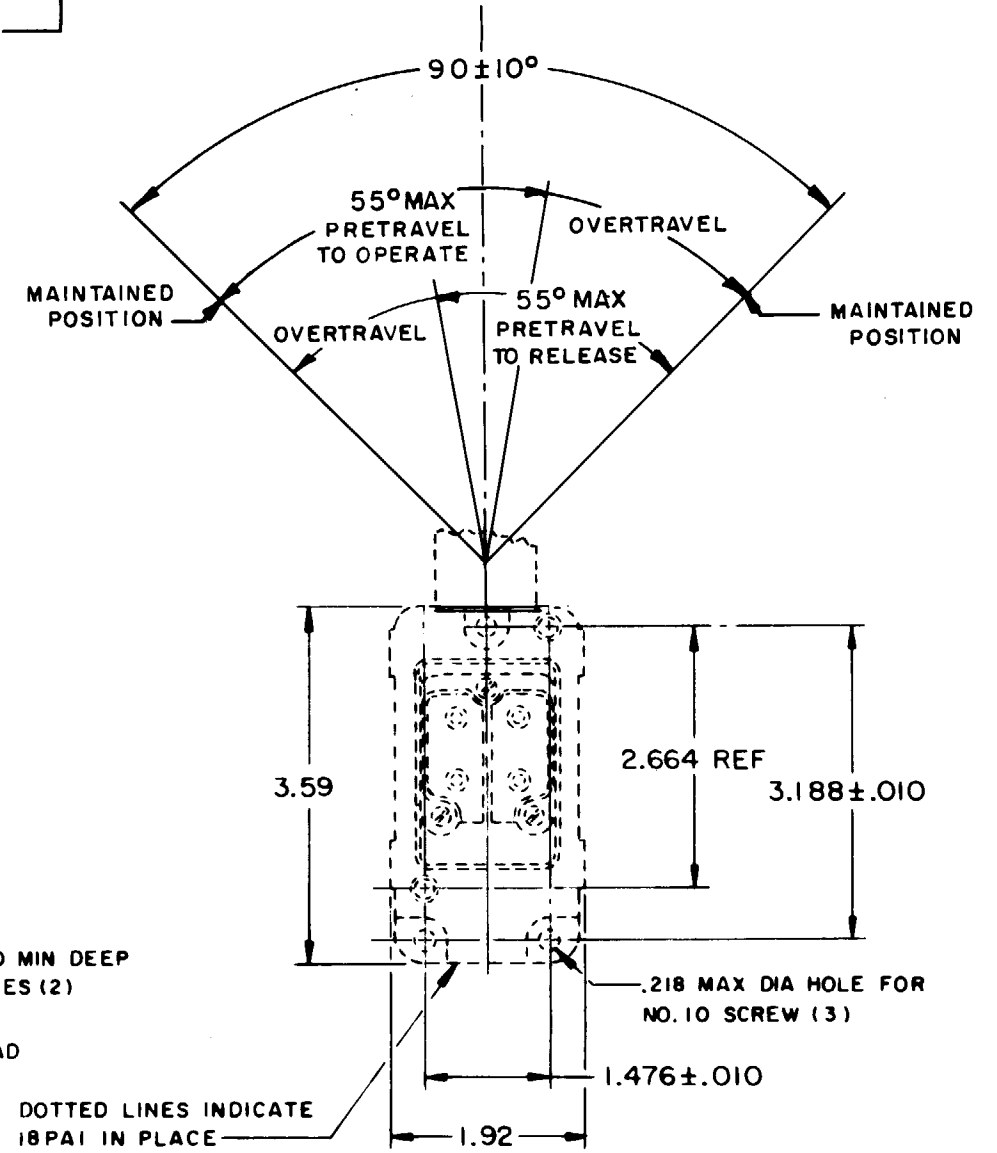


CAPTIVE HEAD SCREW (4)

.180 ± .030 X .320 MIN DEEP  
 CLEARANCE HOLES (2)

1/4-20 UNC MOD THREAD  
 X .562 MIN DEPTH (3)

DOTTED LINES INDICATE  
 18PA1 IN PLACE



3.59

2.664 REF

3.188 ± .010

.218 MAX DIA HOLE FOR  
 NO. 10 SCREW (3)

1.476 ± .010

1.92

206LS1

M

DRAWING NUMBER

ISSUE

9

REVISIONS

A	CO18388 CO18785
M B F	14 MAY 64
B	CO20673
M B F	25 APR 66
C	CO25152
M B F	24 APR 69
D	CO-77031
J D B	22 DEC 93

19 MAY 64

14 MAY 64

THIS DRAWING COVERS A PROPRIETARY ITEM AND IS THE PROPERTY OF MICRO SWITCH, A DIVISION OF MINNEAPOLIS-HONEYWELL REGULATOR CO. THIS DRAWING IS NOT TO BE COPIED OR USED WITHOUT THE APPROVAL OF MICRO SWITCH.

CHARACTERISTICS	ELECTRICAL DATA	SCALE 1/2 TO 1
OPERATING TORQUE — — — 3.0 IN-LB MAX	CONTACT ARRANGEMENT (SEE CIRCUIT DIAGRAM)	DO NOT SCALE PRINT
	10A-120, 240, OR 480 VAC, 1/3 HP - 120 VAC 3/4 HP - 240 VAC; 0.8A - 115 VDC; 0.4A - 230 VDC .1A - 550 VDC PILOT DUTY: 600 VAC MAX	UNLESS OTHERWISE NOTED DIMENSIONS ARE IN INCHES <b>TOLERANCES ARE:</b> ONE PLACE (.0) ±.030 TWO PLACE (.00) ±.015 THREE PLACE (.000) ±.008 ANGLES ±
SWITCH - BASIC REPLACEMENT — — — 2 MNS		WEIGHT

NOTE -

- 1 - ROLLER LEVER MAY BE LOCKED IN ANY POSITION THRU 360°
- 2 - ROLLER LEVER FURNISHED UNASSEMBLED IN UNIT PACKING BOX